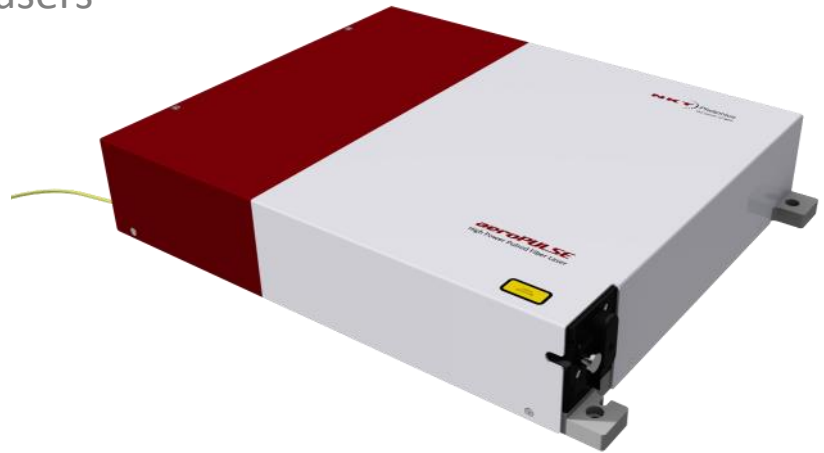


# aeroPULSE

## High power picosecond fiber lasers

- Up to 40W Average Power
- Excellent Beam Pointing Stability
- Narrow Linewidth
- Compact & Rugged OEM Design
- Low Cost of Ownership
- All-Fiber Design, Industrial Reliability
- Maintenance Free 24/7 Operation
- System Monitoring via Remote Diagnostics
- No Warm-Up Time – Instant ON



## Applications

- Laser Direct Imaging
- Material processing
- Semiconductor inspection
- CARS imaging
- Raman (SRS) imaging
- OPO pumping
- Supercontinuum generation
- TCSPC/FLIM/FRET/Single molecule detection

aeroPULSE is a portfolio of industrial-grade mode-locked pulsed fiber lasers based on NKT Photonics world renowned Crystal Fibre platform. These commercial systems are all-fiber, highly integrated, compact form factor and positioned to be a complete self-contained platform. A 24 month warranty is standard and the fully modular optical solution ensures easy turn-key operation, flexibility and up-time.

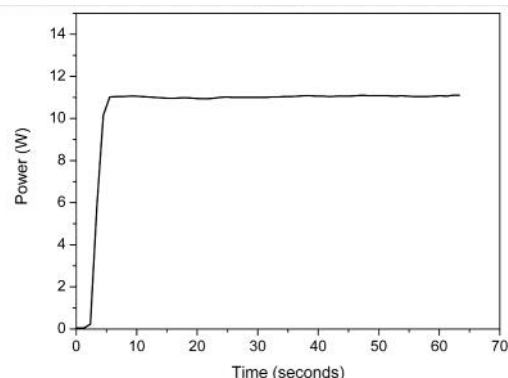
The system configuration consists of a 19" rack-mountable control unit and a very low profile laser head that can be mounted either horizontally or vertically. The complete system can be either air-cooled for low output power performance or water-cooled for high output power performance.

System operation is simple and various functions can be changed on-the-fly without powering down the system in your application. The aeroPULSE series provides high power quasi-CW output, perfect beam quality, exceptional stability and 24/7 maintenance free operation.

As standard, aeroPULSE is available with either 10 or 40W output power emitting at 1035nm. Other wavelengths, including green, are available upon request.

Model	Power	Pulse Length	Rep. Rate
PS10	10 W	5 ps	80 MHz*
PS40	40 W	20 ps	20 MHz*

\*) Other values available on request



aeroPULSE offers high stability after only a few seconds with no warm-up time.

